

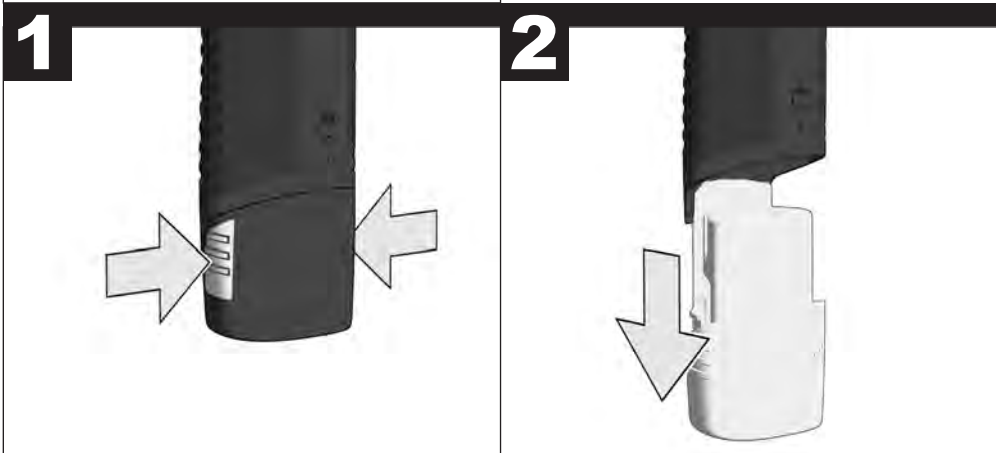
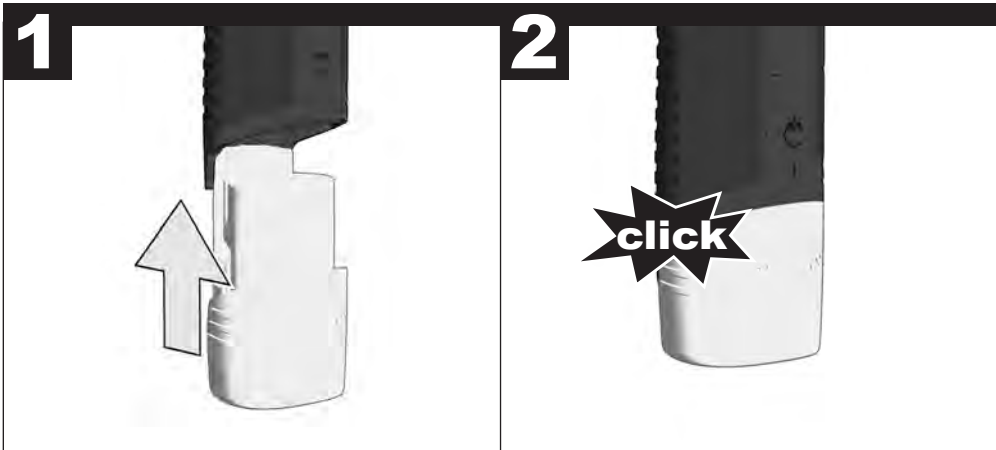
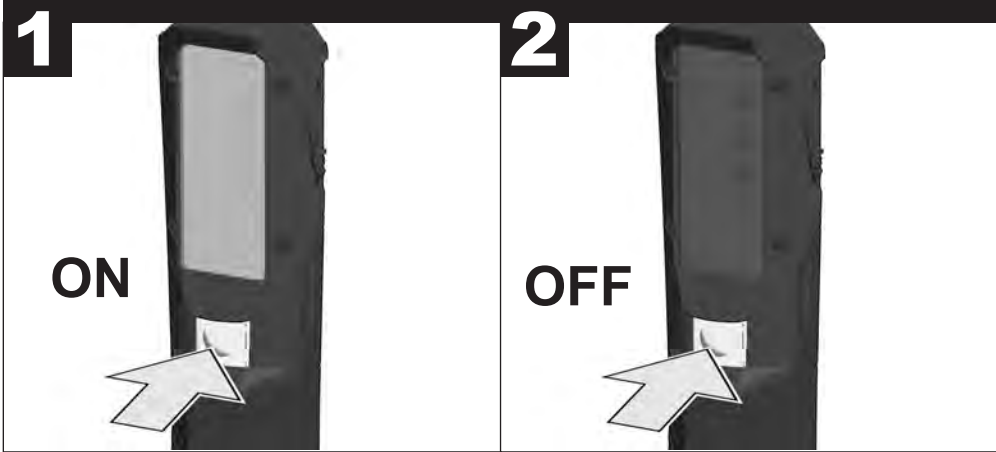
Milwaukee[®]

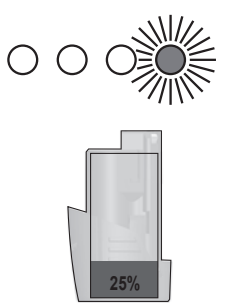
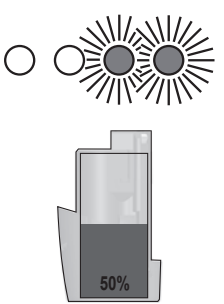
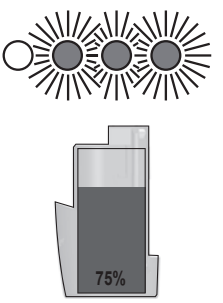
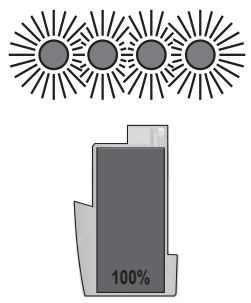
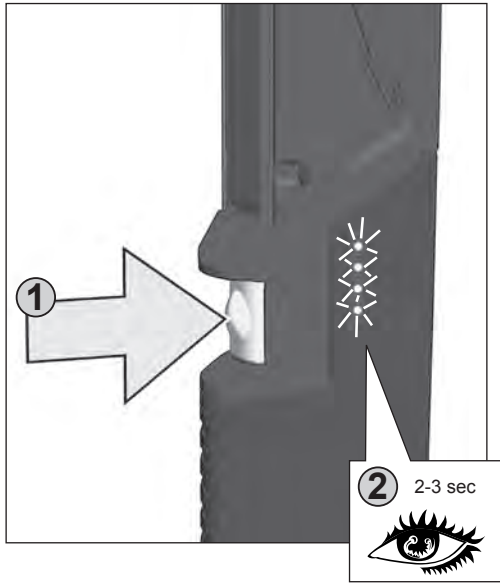
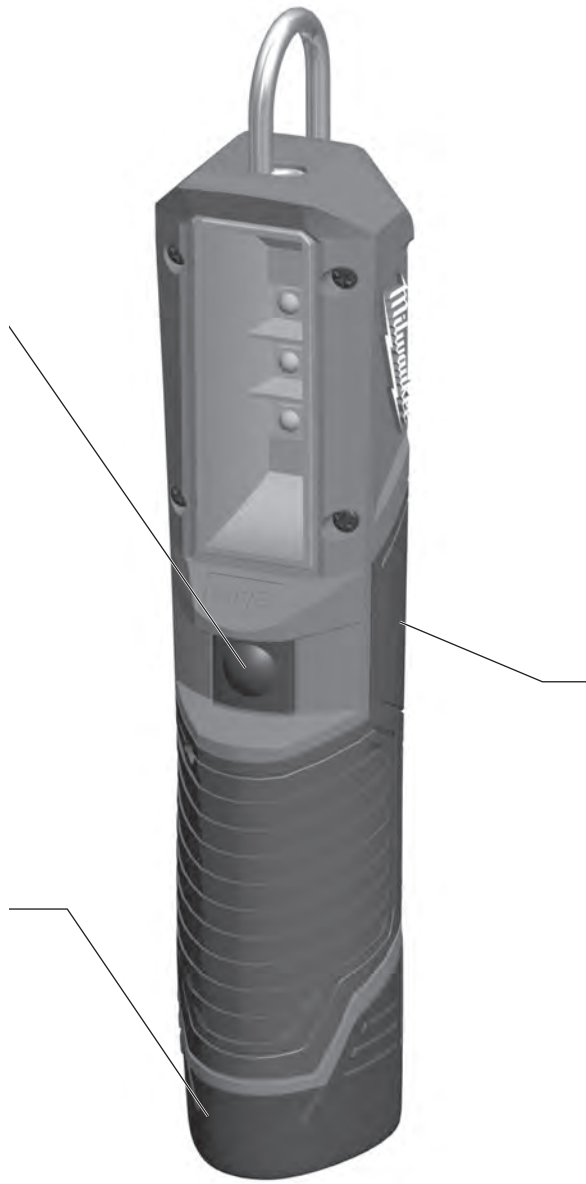
Nothing but **HEAVY DUTY**.[®]



M12 SL

Original instructions







Technical Data**Battery-Lamp****M12 SL**

Lighting time with one fully charged battery (1.5 Ah).....	4-6 h
Battery voltage.....	12 V
Weight according EPTA-Procedure 01/2003.....	429 g

⚠ WARNING! Read all safety warnings and all instructions, including those given in the accompanying brochure. Failure to follow the warnings and instructions may result in electric shock, fire and/or serious injury. **Save all warnings and instructions for future reference.**

SAFETY INSTRUCTIONS

Remove the battery pack before starting any maintenance work on the appliance.

Do not dispose of used battery packs in the household refuse or by burning them. Contact your local council authorities for correct disposal and recycling facilities in your area.

Do not store the battery pack together with metal objects (short circuit risk).

Use only Milwaukee M12 System compatible chargers for charging M12 battery packs. Do not use battery packs from other systems.

Battery acid may leak from damaged batteries under extreme load or extreme temperatures. In case of contact with battery acid wash it off immediately with soap and water. In case of eye contact rinse thoroughly for at least 10 minutes and immediately seek medical attention.

Warning: Do not direct the light beam at persons or animals and do not stare into the light beam yourself (not even from a distance). Staring into the light beam may result in serious injury or vision loss.

Don't use this tool in wet areas .

SPECIFIED CONDITIONS OF USE

The Stick Light is intended to be used light independent use away from mains supply.

Do not use this product in any other way as stated for normal use.

BATTERIES

New battery packs reach full loading capacity after 4 – 5 chargings and dischargings. Battery packs which have not been used for some time should be recharged before use. Temperatures in excess of 50°C (122°F) reduce the performance of the battery pack. Avoid extended exposure to heat or sunshine (risk of overheating). The contacts of chargers and battery packs must be kept clean. For an optimum life-time, the battery packs have to be fully charged, after used. Failure of the battery pack may result if it is repetitively recharged in a fully charged condition. Only recharge a battery if it is partially or fully discharged for optimum life-time and performance.

For battery pack storage longer than 30 days: Store the battery pack where the temperature is below 27°C and away from moisture Store the battery packs in a 30% - 50% charged condition. Every six months of storage, charge the pack as normal.

MAINTENANCE

Do not disassemble the worklight. The LED light cannot be replaced.

Use only Milwaukee accessories and Milwaukee spare parts. Should components need to be replaced which have not been described, please contact one of our Milwaukee service agents. Please visit www.milwaukeeetools.com.au / www.milwaukeeetools.co.nz or contact our customer service centre (Australia Toll Free Telephone Number 1300 361 505) (New Zealand Toll Free Telephone Number 0800 279 624). If needed, an exploded view of the tool can be ordered. Please state the Article No. as well as the machine type printed on the label and order the drawing.

SYMBOLS

Please read the instructions carefully before starting the machine.



CAUTION: Possibly hazardous optical radiation emitted from this product. Do not stare at operating lamp. May be harmful to the eye.



Do not dispose of electric tools together with household waste material! Waste electrical and electronic equipment should be disposed in accordance with local regulations when they have reached the end of their life. They should be collected separately and returned to an environmentally compatible recycling facility provided by local authorities



This tool is only suitable for indoor use. Never expose tool to rain.

Milwaukee Electric Tool Corporation

13135 West Lisbon Road, Brookfield, Wisconsin U.S.A. 53005

Milwaukee Electric Tool Corporation (Australia)

Techtronic Industries (Australia) Pty. Ltd.
Doncaster, Victoria, Australia, 3108

Milwaukee Electric Tool Corporation (New Zealand)

Techtronic Industries (New Zealand) Pty. Ltd.
Mt Wellington, Auckland, New Zealand, 1060

Milwaukee Electric Tool

Max-Eyth-Straße 10, D-71364 Winnenden, Germany

Professionally made in China for Milwaukee Electric Tool Corporation



(04.13)

4931 4144 53